

Optional Items

265022680G(03)



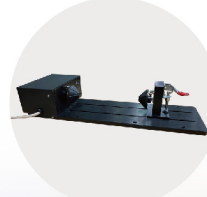
Air Compressor



Blue Laser



Fume Extractor



Rotary Attachment

Model	E200S	E200SL	E200SM
Work Area	510 x 330 mm (20 x 12.9 in.)		
Maximum Part Size (WxLxH)	520 x 340 x 20 mm (20.4 x 13.4 x 0.78 in.) (with grid cutting table)		
	505 x 340 x 76 mm (19.8 x 13.4 x 2.99 in.) (remove grid cutting table)		
CCD Camera	Standard, accurate within 4mm (0.16 in.)		
Working Table	Standard grid cutting table		
Dimensions	915 x 780 x 300 mm (36 x 30.7 x 11.8 in.)		
Laser Source	40W Sealed CO ₂ Laser		30W Metal tube
Drive	Closed-loop DC Servo Control		
Maximum Working Speed	0.51 m/s (20 in/s)		
Maximum Cutting Thickness	10 mm		
Speed Control	Adjustable from 0.1~100% (Up to 5 color-linked speed settings per job)		
Power Control	Adjustable from 0~100% (Up to 5 color-linked power settings per job)		
DPI	Available 250,380,500,760,1000		
Focus Lens	Standard 1.5"		
Computer interface	Full-speed USB 2.0 port, 10 Base-T Ethernet		
Compatible Operating Systems	MS Windows (Printer driver / SmartJOB) Max OS (SmartJOB)	MS Windows (Printer driver)	MS Windows (Printer driver)
Control Panel	7" Touch screen		
Connection	WiFi, Ethernet, USB	Ethernet, USB	Ethernet, USB
Cooling	Water-cooled	Water-cooled	Air-cooled
Air Compressor	Built-in, available for external high performance air compressor (option)		
Blue Laser	10W 450 nm (option)		
Safety	Class 1 Laser Product Complies with EN60825-1 Class 2 Laser Product Complies with CDRH Class 4 Laser Product Complies with Blue Laser (option)		
Facility Requirements			
Electrical	100-240VAC, 50-60Hz Auto Switching, Max. 15A		
Fume Extraction System	External exhaust system with minimum flow rate 300 m³/h (10594 ft³/h) is required, 2,500PA negative pressure (PURE-AIR PA-300 @ 4" exhaust port)		

* Above specifications are subject to change without prior notice.



www.GCCworld.com



GCC Headquarters 4F-1., No.236, Fude 2nd Rd., Xizhi Dist., New Taipei City 22151, Taiwan 886-2-6616-6692 Fax : 886-2-2694-6875
GCC China No.1, Chen Feng Road, Yushan, Kunshan, Jiangsu 215300, China 86-512-5726-1515 Fax : 86-512-5726-1518
GCC Europe B.V. Eglantierbaan 43-45, 2908 LV, Capelle a/d IJssel, The Netherlands 31-10-458-9367
GCC America, Inc 20550 Carrey Road, Walnut, CA 91789, USA 1-909-718-0248 Fax : 1-909-718-0251
US & Canada Only Toll Free: 1-888-284-5211



GCC E200S Series Desktop Laser Engraver

The World's Most Affordable Desktop Laser for Small Business!

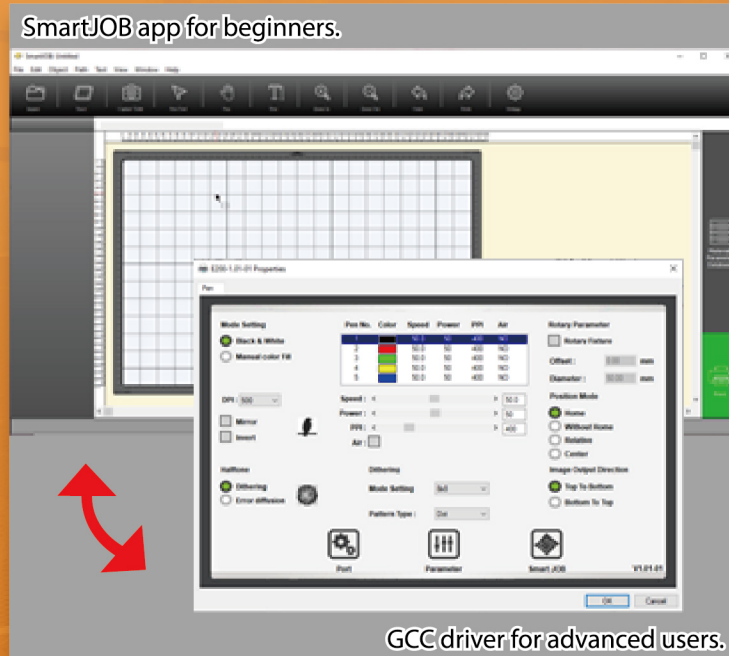


E200S Series

- 510 x 330 mm Desktop Laser Engraver
- 7" Touch Screen Control Panel
- Stamp Mode with shoulder level function
- SmartEYES™ for live preview (E200S)
- Multifunction user interface for both beginners and advance users
- 0.51 m/s (20 in/s) High Speed throughput
- Standard Water-cooled chiller or Air-cooled design for high production. (only for E200S/E200SL)

Desktop Laser Engraver

E200S Series



GCC driver for advanced users.

Simple but Professional

Multifunction user interface for both beginners and advance users. (SmartJOB is available in E200S only.)



Unmatchable Output Quality

GCC E200S Series takes your engraving and cutting to a level beyond other desktop laser engravers.



SmartEYES™

E200S's on board camera allows you to preview your design to make positioning simple and easy. (E200S only)



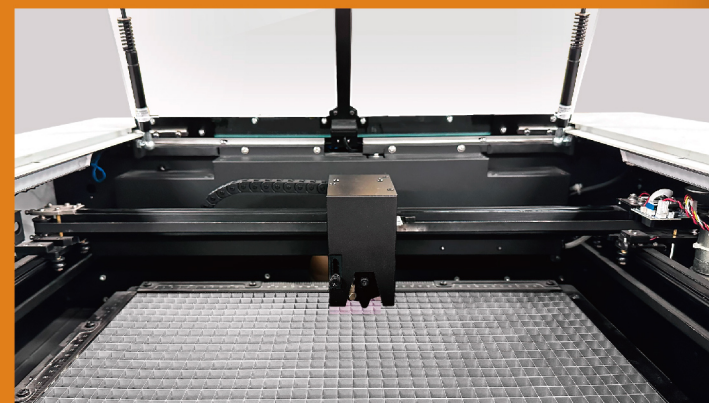
Standard Water Chiller for Long-time Working

E200S Series desktop laser engraver comes with a standard water chiller to ensure machine efficiency. (E200S, E200SL only)



7" Large Touch Panel

With colorful intuitive 7" touchscreen interface, E200S Series desktop laser engraver can bring your inspiration to life.



High Throughput for Unlimited Imagination

20ips Processing speed with DC servo motor to boost productivity while maintaining precision.



Stamp Mode with Shoulder Level Function

The stamp mode with shoulder level function enables you to produce a professional stamp easily.

