

Optional Items



CCD Camera



Air Compressor Filter



Air Extraction System



Air Compressor Unit

Specification			H230			
Model Series	C-Series			I-Series		
Model Number	C12	C30	C60Ti	F20RMZ	F20SHS	F40HHS
Laser Source	CO2			Fiber		
Wattage	12W	30W	60W	20W	40W	
Max. Work Area (W x L)	23.6 x 16 in.(600 x 400 mm)					
Scan Area (mm)	60 / 140			70 / 110		
Dimension (W x L x H)	48 x 34.8 x 13.9 in.(1220 x 885 x 1352 mm)					
Cooling	Air-cooled					
Drive	AC Servo Motor					
Speed	2000 mm/s (marking)					
Z-Axis Travel	210 mm, Automatic					
Computer Interface	Standard printer port and USB 2.0* port					
Systems	Microsoft Windows 2000 / XP / Vista(32 Bit) / 7(32 Bit)					
Memory Buffer	32 MB standard					
Display Panel	LCD panel display					
Operating System	Microsoft Windows 2000 / XP / Vista(32/64 Bit) / 7(32/64 Bit) / 8(32/64 Bit) (Desktop or Laptop PCs)					
Safety	Class 3R for red pointer					
Facility Requirements						
Operation Voltage	220~240 VAC					
Power Consumption	400W	720W	1730W	2340W		
Air Exhaust System	External exhaust system is required, one 4" connection on the back of the machine					

Scan Lens Specifications

C-Series	H230-C12		H230-C30		H230-C60Ti	
Scan Area (mm)	60 x 60	140 x 140	60 x 60	140 x 140	60 x 60	140 x 140
Spot Size (mm)	0.2	0.27	0.21	0.28	0.26	0.34
Max. Part Height (mm)	150±2	100±2	150±2	100±2	150±2	100±2
I-Series	H230-F20RMZ		H230-F20SHS		H230-F40HHS	
Scan Area (mm)	70 x 70	110 x 110	70 x 70	110 x 110	70 x 70	110 x 110
Spot Size (mm)	0.027	0.043	0.022	0.034	0.044	0.07
Max. Part Height (mm)	184±2	124±2	184±2	124±2	184±2	124±2

* Please visit www.GCCworld.com for more detail.

Δ Specifications are subject to change without prior notice.

* H230 C Series



* H230 I Series



Authorized Dealer



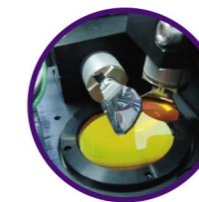
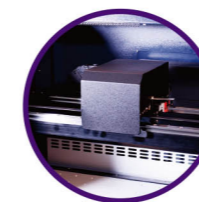
www.GCCworld.com



Laser Marker

GCC LaserPro H230

The Ultimate Marking System on a Flatbed



- 23.6" x 16" (600 x 400 mm) large working area
- A laser marker with integrated system of Galvo scan head and XY linear rails
- Featuring selections of CO₂ or 1064 nm laser sources with different wattages
- Steel frame provides solid structure and ensures marking accuracy
- G-Mark Software with auto-generated S/N function, graphic tiling, 1D, 2D, text, and logo marking
- Can be stand-alone or integrated into conveyor and production line



GCC Headquarters 4F-1., No.236, Fude 2nd Rd., Xizhi Dist., New Taipei City 22151, Taiwan 886-2-6616-6692 Fax : 886-2-2694-6875
 GCC China No.1, Chen Feng Road, Yushan, Kunshan, Jiangsu 215300, China 86-512-5726-1515 Fax : 86-512-5726-1518
 GCC Europe B.V. Eglantierbaan 43-45, 2908 LV, Capelle a/d IJssel, The Netherlands 31-10-458-9367 Fax : 31-10-451-9874
 GCC America, Inc 20453 E Valley Blvd. Walnut, CA 91789, USA 1-909-718-0248 Fax : 1-909-718-0251
 US & Canada Only Toll Free: 1-888-284-5211



Laser Marker

GCC LaserPro H230

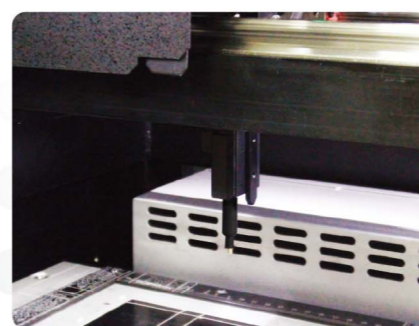
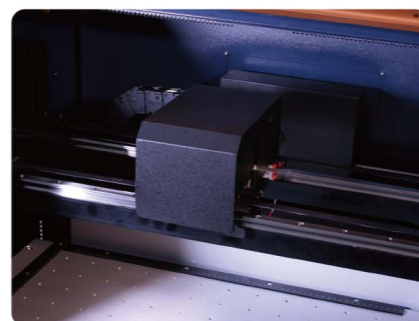


GCC LaserPro H230

The GCC LaserPro H230 model is a versatile system that combines galvanometer system with XY axis, providing an all-in-one solution for industrial use. Moving galvanometer scan-head on an XY gantry system over large work table delivers high throughput by swift marking speed and minimized material loading and unloading times.

Large Area Marking

Integrated galvanometer scan-head on an XY gantry moving system allows marking on max. 600 x 400 mm object tray in one pass, and eliminates system integration.

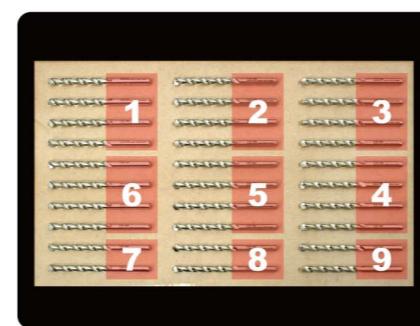
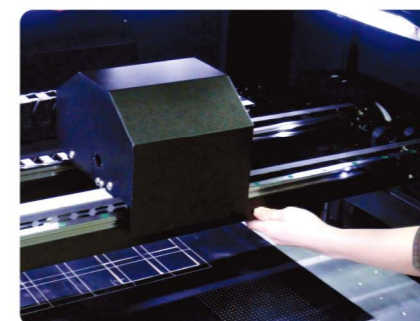


SmartPIN Auto Focus (Patented)

The plug-and-play probe design makes focusing a one-touch process and provides the accuracy and precision required for optimum quality in the lasering process.

Drag-N-Engrave

Intuitive Drag-N-Engrave feature greatly reduces complex set up procedures and allows users to directly drag the lens carriage to the starting point of a job.

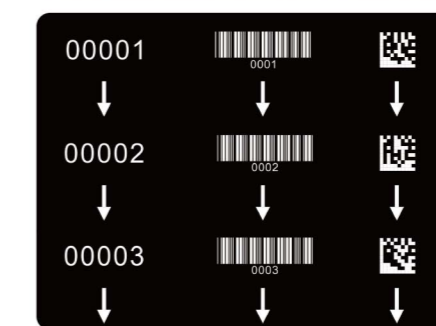


Split By Layer

Place your objects to be marked on the same layer based on your the scan lens area and the Split By Layer function can perform group laser marking in order of layer to reaches max. 600 x 400mm work area. This enables to use the scan area effectively, avoid unnecessary movements of the scan head carriage and greatly boost up the productivity.

Emergency Stop

Big red button located on the top of the machine allows operators to stop the laser and the lens carriage immediately to provide maximum safety.

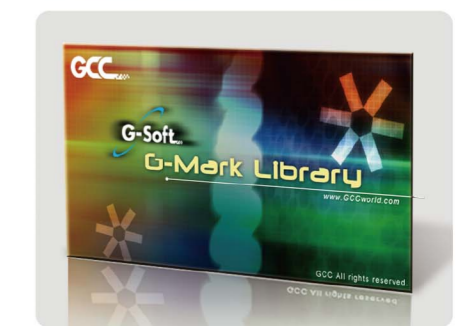


Auto String

G-Mark Software with auto-generated S/N function, graphic tiling, 1D, 2D, text, and logo marking.

SmartLID (Patented)

An innovative lid that opens from both ends allowing easier access and daily maintenance.



G-Mark Library (Optional)

The programmable software can be used to customize functions by using VB scripts. All commands are received real time from a master PC and position offsets, rotating angles, and sequential marking can be set up. With G-Mark Library, the workflow of marking process can be optimized and simplified at the production line.