



STELLARJET K72UV

Your Primary Choice for UV Printing Market!

Y M C K Lc Lm W V



High Resolution
Broad Applications

Printed Width	Up to 1780 mm (70")	Material Width	Max. 1800 mm (70.8")
Printed Width of Borderless Printing	Up to 1720 mm (67.7")	Media Handling	Conveyor Flatbed / Auto Roll-Fed
Channel	8 Channels	Ink Capacity	2 Liters for each color
Media Thickness	Up to 50 mm (2")	Interface	Ethernet 10 / 100 / 1000 Base T
Dimensions (L x W x H)	3322 mm x 1250 mm x 1570 mm (130.8" x 49.2" x 61.8")	Power Supply	200 - 240 VAC, 20 A, 50 Hz / 60 Hz
Colors	C, M, Y, K - Standard White, Lc, Lm, Varnish - Option	RIP Solution	Onyx™ Production House / Caldera Onyx™ PosterShop / Wasatch
Output Resolution	720 dpi 1440 dpi - With Option Lc, Lm	Support File Formats	All popular graphic file formats (JPEG, TIFF, EPS, PSD, EMF, WMF...)
Print Speed	<i>Eco.Mode</i>	29.32 m ² / hr (315.61 ft ² / hr)	
	<i>Production Mode</i>	10.48 m ² / hr (112.81 ft ² / hr)	
	<i>Commercial Mode</i>	7.18 m ² / hr (77.29 ft ² / hr)	
	<i>Quality Mode</i>	5.69 m ² / hr (61.25 ft ² / hr)	
	<i>Fine Mode</i>	3.25 m ² / hr (34.98 ft ² / hr)	
	<i>Super Fine Mode</i>	3.05 m ² / hr (32.83 ft ² / hr)	
	<i>Solid Mode</i>	1.79 m ² / hr (19.27 ft ² / hr)	

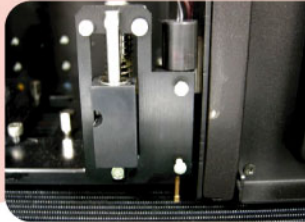
★ Above specifications are subject to change without prior notice.

Features



High Resolution and Brilliant Quality Images Output

Equipped with 8 drop-demand Piezo printheads with a small droplet of 14 pl, GCC StellarJET K72UV delivers high resolution at true 720 dpi and apparent 1440 dpi with Lc and Lm added, allowing users to produce a more refined output images and extend more applications.



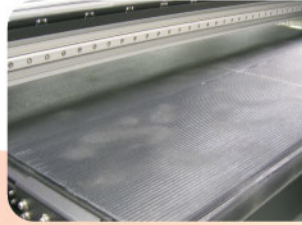
Auto Media Calibration (AMC™)

The auto media calibration pin automatically detects and gauges the distance between the print heads and loaded media, adjusting automatically to the optimized print height based on the thickness of the loaded media.



8 color in 1 machine

GCC StellarJET K72UV expands the ink channel with C, M, Y, K, Lc, Lm, White and Vanish, offering more color configuration combinations and printing applications.



Combo Media Handling System

With the conveyor flatbed handling system and roll to roll system, GCC StellarJET K72UV is able to print on a wide variety of materials, such as acrylic, corrugated board, aluminum, plastic, glass, vinyl and more. Printable width is up to 1830 mm (72") and thickness is up to 50 mm (2").



White Ink Circulation System

To prevent printhead clogging, White Ink Circulation System is designed to effectively optimize white ink condition, ensures consistent printing quality and reduce the chance of sediments.



SmartMesh™

Smartmesh is a unique function designed by GCC, it effectively solves the banding problem while printing, and greatly increases printing quality.

Total Solution



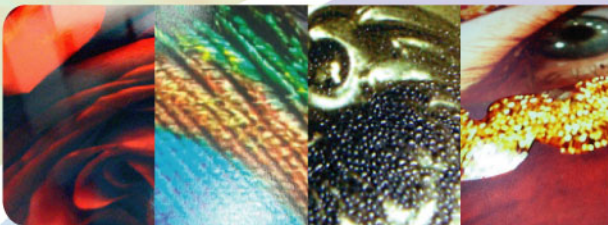
Pre-coat → Printing → Top-coat

UV ink can be printed on all substrate, but the adhesion ability of UV ink can be very between printing on slippery and rough media: ceramic tiles, acrylic, glass, stainless steel, PP, laminate...etc, through this combined process: Pre-coat→Printing→Top-coat. It will resolve all your requirements once for all.



White Solution

StellarJET UV offers three major utilizing white ink applications as a base, overcoat, and spot color. With the White solution, it can be easily used to produce brilliant and rich color output on any transparent and dark media, offering excellent quality images with high throughput to fulfill all needs of Sign, POP and PFP.



Varnish Solution

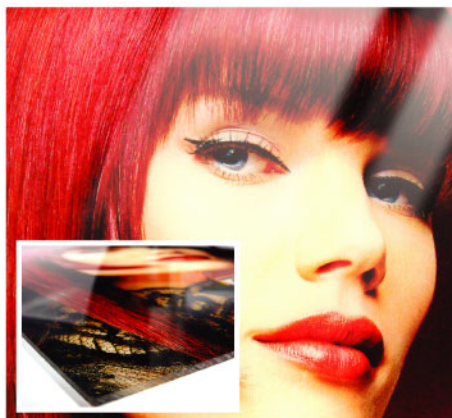
StellarJET UV's optional varnish not only enhances the visual quality but also creates the tactile attribute of graphics. Users are able to apply four varnish modes: Gloss, Semi-gloss, Matte and Contour varnish, a high value added application and cost saving on labor and laminator equipment.

Authorized Dealer

White Solution



Glass/Acrylic Application



Varnish Resolution



GCC Headquarters 4F., No.236, Fude 2nd Rd., Xizhi Dist., New Taipei City 22151, Taiwan
 GCC China No.1, Chen Feng Road, Yushan, Kunshan, Jiangsu 215300, China
 GCC Europe B.V. Eglantierbaan 43-45, 2908 LV, Capelle a/d IJssel, The Netherlands
 GCC America, Inc 323 Paseo Tesoro, Walnut, CA 91789, USA

886-2-6616-6692 Fax: 886-2-2694-6875
 86-512-5726-1515 Fax: 86-512-5726-1518
 31-10-458-9367 Fax: 31-10-451-9874
 1-909-718-0248 Fax: 1-909-718-0251
 US & Canada Only Toll Free: 1-888-284-5211

www.GCCworld.com