

# STELLARJET

	Model	K72LSUV	K72LSUV II	K100UV
Print Speed	ECO Mode	29.32 m <sup>2</sup> /hr (315.61ft <sup>2</sup> /hr)	51.56 m <sup>2</sup> /hr (555.61ft <sup>2</sup> /hr)	57 m <sup>2</sup> /hr (620.61ft <sup>2</sup> /hr)
	Production Mode	10.48 m <sup>2</sup> /hr (112.81ft <sup>2</sup> /hr)	17.87 m <sup>2</sup> /hr (192.61ft <sup>2</sup> /hr)	22 m <sup>2</sup> /hr (236.61ft <sup>2</sup> /hr)
	Commercial Mode	7.18 m <sup>2</sup> /hr (77.29ft <sup>2</sup> /hr)	12.06 m <sup>2</sup> /hr (129.61ft <sup>2</sup> /hr)	14 m <sup>2</sup> /hr (150.61ft <sup>2</sup> /hr)
	Quality Mode	5.69 m <sup>2</sup> /hr (61.25ft <sup>2</sup> /hr)	8.88 m <sup>2</sup> /hr (96.61ft <sup>2</sup> /hr)	11 m <sup>2</sup> /hr (119.61ft <sup>2</sup> /hr)
	Fine Mode	3.25 m <sup>2</sup> /hr (34.98ft <sup>2</sup> /hr)	5.59 m <sup>2</sup> /hr (60.61ft <sup>2</sup> /hr)	6.7 m <sup>2</sup> /hr (72.61ft <sup>2</sup> /hr)
	Super Fine Mode	3.05 m <sup>2</sup> /hr (32.83ft <sup>2</sup> /hr)	5.19 m <sup>2</sup> /hr (56.61ft <sup>2</sup> /hr)	6.4 m <sup>2</sup> /hr (69.61ft <sup>2</sup> /hr)
Solid Mode	1.79 m <sup>2</sup> /hr (19.27ft <sup>2</sup> /hr)	3.44 m <sup>2</sup> /hr (37.61ft <sup>2</sup> /hr)	2.9 m <sup>2</sup> /hr (31.61ft <sup>2</sup> /hr)	
Print Resolution		720 dpi / 1440 dpi -with option Lc, Lm		
Printing	Technology	Drop-on-Demand Piezo		
	Print cartridge colors	Standard: C, M, Y, K		
	Ink types	Optional: Lc, Lm,White, Varnish		
	Ink drops	UV ink		
	Ink capacity	14 pt		
	Nozzles	512 nozzles / color	1024 nozzles / color	
Printer Dimensions	Print width	1780 mm (70 in.)	2540 mm (100 in.)	
	Printer (WxDxH)	3327 x 1210 x 1661 mm (130.9 x 47.6 x 65.3 in.) <small>(not including rollers)</small>	5320 x 1600 x 1700 mm (209 x 63 x 66.2 in.) <small>(not including rollers)</small>	
	Shipping (WxDxH)	3327 x 1634 x 1661 mm (130.9 x 64.3 x 65.3 in.) <small>(not including rollers)</small>	5320 x 2110 x 1700 mm (209 x 83 x 66.2 in.) <small>(not including rollers)</small>	
	Printer	789 Kg (1735.8 lbs)	3126 Kg (6892 lbs)	
	Shipping	1100 Kg (2420 lbs)	3667 Kg (8067 lbs)	
	Handling	Conveyor / Roll to Roll		
Media	Thickness	50 mm (2 in.)		
	Max. Width	1800 mm (70.6 in.)	2550 mm (100.39 in.)	
	Max. Weight	Up to 25 Kg / m <sup>2</sup> (55 lbs)	Up to 60 Kg / m <sup>2</sup> (132 lbs)	
	Standard	Extension table / Heavy duty Roll to Roll system		
Optional	Extension table / Heavy duty Roll to Roll system / White / Varnish / Lc & Lm solution / Primer / Top-coat			
RIP Solution	Onyx™ Production House / Onyx™ PosterShop / Caldera / Vassatch (optional)			
Interface	Ethernet 10 / 100 / 1000 Base T			
Supported File Formats	All popular graphic file formats (JPEG, TIFF, EPS, PSD, EMF, WMF, PNG, PCX, TGA)			
Power Supply	200 ~ 240 VAC, 15 A, 50 or 60 Hz			
	200 ~ 240 VAC, 16 A, 50 or 60 Hz			

■ Above specifications are subject to change without prior notice.

Authorized Dealer



[www.GCCworld.com](http://www.GCCworld.com)



GCC Headquarters 4F, No.236, Fude 2nd Rd., Xishi Dist., New Taipei City 22151, Taiwan 886-2-6616-6692 Fax: 886-2-2694-8875  
 GCC China No.1, Chen Feng Road, Yuelian Kunshan, Jiangsu 215300, China 86-512-6726-1515 Fax: 86-512-6726-1518  
 GCC Europe BV Eggenberken 4-46, 2008 LV Capelle aan den IJssel, The Netherlands 31-10-458-9367 Fax: 31-10-451-9874  
 GCC America, Inc 323 Paseo Tesoro, Walnut, CA 91789, USA 1-909-718-0248 Fax: 1-909-718-0251  
 US & Canada Only Tel/Fax: 1-888-284-5211

# GCC

## STELLARJET

UV-Curable Inkjet Printer



StellarJET K72LSUV  
Energy-Efficient Model



StellarJET K72LSUV II  
High Throughput Model

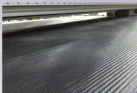


StellarJET K100UV  
Flagship Model

## Innovative Technology



**Heavy Duty Roll to Roll System (optional)**  
GCC StellarJET K72LSUV and K72LSUV II offer a heavy duty roll to roll system which are capable of feeding up to 154 lbs (70 kg) flexible media while GCC StellarJET K100UV offers that up to 220 lbs (100kg). It's quick and convenient for users to print on extra long and heavy vinyl or banners. It reduces the loading and unloading frequency to enhance the output efficiency. ■ ■ ■



**Good Vacuum Efficiency System**  
Thoughtful design has perfectly divided vacuum area into different zones. Each one can be applied according to the media width for best energy saving concept. The continuous variable vacuum system of flagship StellarJET K100UV even allows users to set any vacuum range to achieve the best vacuum efficiency. ■



**SmartMesh™** is a unique function designed by GCC. It effectively solves banding problem while printing, and greatly increases printing quality. ■ ■ ■



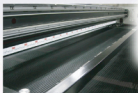
### High Resolution and Brilliant Quality Images Output

Equipped with 4-18 Korea Minolta Piezo printheads with a small droplet of 14 pl, GCC StellarJET UV delivers high resolution at true 720 dpi quality images with the YMC4 four-color model and apparent 1440 dpi when using the optional Light Cyan and Light Magenta ink. This allows users to produce a more refined image output and extend their application. ■ ■ ■



### Auto Media Calibration (AMC™)

The auto media calibration pin automatically detects and gauges the distance between the print heads and loaded media then automatically adjusts the height of printhead to the optimized position based on the thickness of the loaded media. ■ ■ ■



### Accurate Output with Steel Frame Construction

Steel frame design enhances the strength of machine structure, and increases the printing accuracy and stable quality. ■



### White Ink Circulation System

To prevent printhead from clogging, White Ink Circulation System is designed to effectively optimize white ink condition, ensures consistent printing quality and reduces the chance of sediments. ■ ■ ■

## Vivacity, Brilliance, Freshness & Unlimited Potentiality

With this colorful spirit and technical advances, GCC offers an extensive range of products in Sign and Graphic industries.

GCC upholds the principle of innovation to develop GCC StellarJET UV inkjet printers, the faith of developing products is based on the needs of users and applications in research and development. StellarJET digital printer not only possesses a lot of patents, but also is a pride of GCC.

■ **GCC StellarJET K72LSUV** is a high energy-effective UV inkjet printer. It is capable of printing directly on a media up to 1760 mm (70 in.) width, and 50 mm (2 in.) thickness. New LED system not only saves customer's cost but also effectively reduces energy to protect our environment. Customer can print more media types, for example: heat-sensitive media, PVC to increase competitiveness.

K72LSUV all-in-one solution will allow user to print to colors + White + Varnish and both rigid and roll media with just on one machine, so user will no longer need to buy two machines to achieve the same job.



■ **GCC StellarJET K72LSUV II** is an environmentally friendly and high performance UV inkjet printer. It is capable of printing directly on a media up to 1760 mm (70 in.) width, and 50 mm (2 in.) thickness. It is equipped with 1024 nozzles print-heads with a small droplet of 14 picoliter enabling higher speed up to 51.6 m/hour (55.6 ft/hour) to enhance the work efficiency. New K72LSUV II nozzles print-heads not only reduce job printing time but also create stunning printing effect.

K72LSUV II is also equipped with LED curing system, customers can vastly print more media types to increase competitiveness.



■ **GCC StellarJET K100UV** is a flagship model which integrates all the advantages of StellarJET UV and performs with highest resolution, widest print width, thickest media thickness, heaviest media weight, fastest throughput, and best printing accuracy.

With this powerful competitive equipment, users can increase earning by digital fast printing in different kinds of special applications that other print shop can't, such as ceramic tiles, glass, stainless, etc. for architecture or wall paper, wood door, acrylic, laminates, etc. for indoor decoration. This is the best choice for Grand format UV Inkjet Printer.



### Varnish Solution

StellarJET UV's optional varnish not only enhances the visual quality but also contains the tactile effect. Users can apply varnish directly on graphics via printheads as either an all-over coating, or as a spot highlighting, giving your printings a more vivid and brighter finish. ■ ■ ■



### Total Solution: Pre-Cut → Printing → Top-Coat

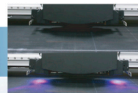
UV ink can be printed on all substrates, but the adhesion ability of UV ink can be varied between printing on slippery and rough media. For special substrates which could cause UV ink adhesion issues, for example: ceramic tiles, acrylic, glass, stainless steel, laminates, etc. GCC provides its unique solution: Pre-cut → image printing → Top-coat. A layer of primer\* is applied to enhance ink adhesion before being printed by GCC StellarJET. A top-coat\* layer is then applied to protect the image surface. Through this combined process, top printing quality can be produced even on the most difficult-to-print media. The process also produces a Scratch-Proof and Water-Proof finishing. It will resolve all your requirements once for all. ■ ■ ■

### White Solution

StellarJET UV offers three major utilizing white ink applications as a base, overcoat, and spot color. With the White solution, it can be easily used to produce brilliant and rich color output on any transparent and dark media and also excellent quality images with high throughput to fulfill all needs of Sign and POP and PPF. ■ ■ ■



## Human Touch Design



### Dual UV Lamps Curing System with Auto Shutters

Two UV lamps allow bi-directional, high-speed image printing which results in double throughput and great efficiency in every job. Each UV lamp is fitted with an auto-shutter to shield printheads from stray UV rays and protect user's eyes during maintenance. ■



### New LED System

Two UV LED lamps that can be instantly powered on eliminate warm up time. New LED system not only saves customer's cost but also effectively reduces energy to protect our environment. Customers can print more media types, for example: heat-sensitive media, PVC to increase competitiveness. ■ ■ ■

### Continuous Ink Supply System

Continuously monitors the remaining ink levels for each ink color container on the printhead carriage and automatically refills nearly depleted containers from a self-contained ink supply tank. This guarantees a stable supply of ink during a print job; never worry about running out of ink in the middle of a print job. ■ ■ ■

### Hybrid/Combo Media Handling System

With GCC's fastest and roll to roll handling system, both rigid and flexible media are applicable to GCC StellarJET UV Printer. GCC StellarJET K100UV and K72UV's conveyor fedded handling system extend the media application. The hybrid/combo media handling system enhances the productivity and boost the benefit. ■ ■ ■

### Integrated Work Station

An embedded industrial computer integrated with a custom control interface manages all functions of the StellarJET, operate and print selected graphics via a few button clicks. The ergonomic design of the extended workstation platform allows easy operation of the StellarJET UV inkjet printer. ■ ■ ■

## Benefit

\* Different primer is used for different media.  
\* Different top-coat is used for different media.